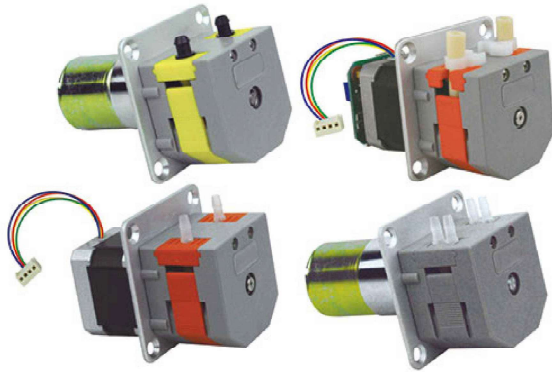




## OEM Product

### MiniPump Series



### Product Introduction

Minipump series products which adopt compact and embedded design are more suitable for supporting a variety of instruments and equipments. Single and dual channel are optional. It accepts 8 kinds of tubing. Flow rates are 0.0024-190 mL/min. PharMed BPT long-life tubing from French Saint-Gobain is installed in internal part of pump head. Applicable motors for Minipump are stepper motor, DC motor, AC motor and other modes to drive with wide applications.

### Features

- | Attractive appearance, compact structure.
- | Easy to operate and economical cost.
- | Accept many kinds of motors to drive.
- | Supply several colors of appearance, ideal for supporting analytical instruments.

### Typical Application

- | Discharge condensate water in the flue gases survey meter.
- | Support biochemistry analytical instruments.

## Tubing Installation Procedure

A. Make the two tubing clamps align the slide way of pump head two sides.



B. Ensure that the tubing is in the middle of rollers, and push the clamps into the pump head.



C. Make the compression block align the upper slide way of pump head.



D. Press the compression block into the pump head, and ensure it fixed.



Pigment accurate allocation



Reagents dispensing



PH control system sampling

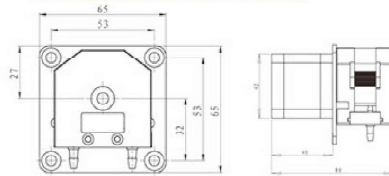




### OEM-B01



#### Outline dimensional drawing

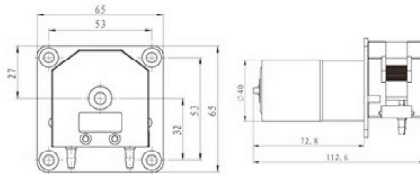


Speed range	≤300 rpm
Max flow rate	190ml/min
Motor type	42 stepper motor
Motor phase number	2
Motor step angle	1.8
Motor phase voltage	2.2V
Motor phase current	1.0A

### OEM-MZ Serie



#### Outline dimensional drawing

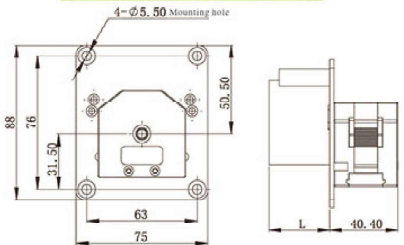


Model No.	Rotation Speed (rpm)	Power Supply	Motor Type
OEM-MZ01	170	DC 12V or DC 24V	∅ 37 DC Motor
OEM-MZ11	5		
OEM-MZ12	10		
OEM-MZ13	15		
OEM-MZ14	20		
OEM-MZ15	30		
OEM-MZ16	50		
OEM-MZ17	100		
OEM-MZ18	160		
OEM-MZ19	167		
OEM-MZ20	278		

### OEM-MJ Serie



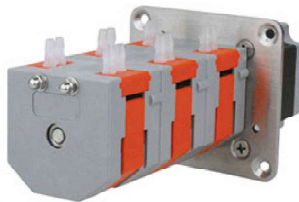
#### Outline dimensional drawing



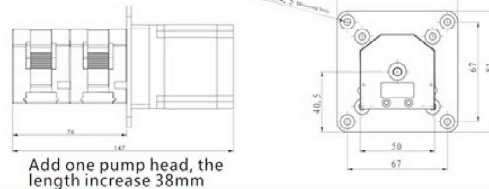
Model No.	Rotation Speed (rpm)	Direction of rotation	Power Supply	Motor Type
OEM-MJ101	2.5/3	Unidirectional	AC 110V or AC 220V	AC Motor
OEM-MJ102	4/5			
OEM-MJ103	5/6			
OEM-MJ201	4.2/5	Bidirectional		
OEM-MJ202	5/6			
OEM-MJ203	11.7/14			

Note: In the rotation of speed, \* represents the rotation speed in 50/60HZ.

### OEM-B126



#### Outline dimensional drawing



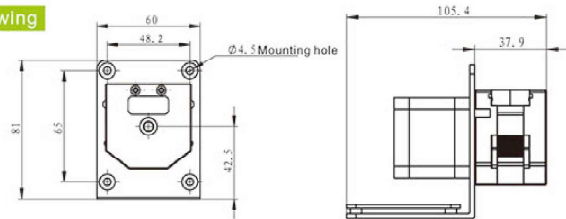
Add one pump head, the length increase 38mm

Speed range	≤300 rpm
Max flow rate	190ml/min
Pump head	MiniPump-N
Motor type	57 stepper motor
Motor phase number	2
Motor step angle	1.8
Motor phase voltage	3.75V
Motor phase current	3.0A

### OEM-B013, OEM-B014



#### Outline dimensional drawing



OEM-B013 Technical Specifications		OEM-B014 Technical Specifications	
Speed range	0.1-300rpm	Speed range	0.1-300rpm
Flow rate range	0.0024-190ml/min	Flow rate range	0.12-190ml/min
Communication interface	RS232,RS485 interface modbus protocol, control start/stop, direction and speed	Speed control	Potentiometer speed regulation
Address setting	1-32	External analog signal control	0-5V, 0-10V, 4-20mA 3 analog signal for option
Motor type	42 stepper motor	External control	Start/stop,direction (external passive signal control)
Input voltage	DC 24V	Motor type	42 stepper motor
Power	<30W	Input voltage	DC 24V
		Power	<30W

